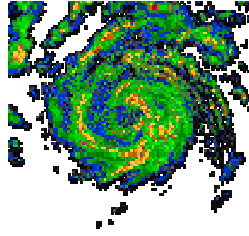


Hurricane Season

Act Now And Be Prepared



To prepare for the possibility of a major hurricane hitting Long Island you should assemble a hurricane disaster supply kit.

A disaster supply kit should include:

- ◆ First aid kit and essential medications.
- ◆ Canned food and can opener.
- ◆ At least three gallons of water per person.
- ◆ Protective clothing, rainwear, and bedding or sleeping bags.
- ◆ Battery-powered radio, TV, flashlight, and extra batteries.
- ◆ Special items for infants, (formula, diapers, medication, diaper rash medicine) elderly, or disabled family members.
- ◆ Written instructions on how to turn off electricity, gas and water if authorities advise you to do so. (Remember, you'll need a professional to turn them back on.)
- ◆ Keep a non-electronic phone in your home – the phone lines often remain operational even during power outages
- ◆ Inventory personal property; safely secure all records and valuable documents in a water tight place.
- ◆ Have materials available to protect your doors and windows
- ◆ Most importantly, tell LIPA if someone in your family uses life support equipment - call 1-800-490-0025.



Preparing a Family Evacuation Plan

Identify ahead of time where you could go if you are told to evacuate. Choose several places--a friend's home in another town, a motel, or a shelter. Keep handy the telephone numbers of these places as well as a road map of your locality. You may need to take alternative or unfamiliar routes if major roads are closed or clogged. Listen to local radio or TV stations for evacuation instructions.

If advised to evacuate, do so immediately.

Take these items with you when evacuating:

- ◆ Prescription medications and medical supplies;
- ◆ Bedding and clothing, including sleeping bags and pillows
- ◆ Bottled water, battery-operated radio and extra batteries, first aid kit, flashlight
- ◆ Car keys and maps
- ◆ Documents, including driver's license, Social Security card, proof of residence, insurance policies, wills, deeds, birth and marriage certificates, tax records, etc.

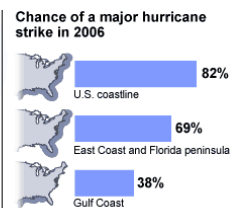
What to Do When a Hurricane WATCH Is Issued:

- ◆ **Listen** to local radio or TV stations for up-to-date storm information.
- ◆ **Prepare** to bring inside any lawn furniture, outdoor decorations or ornaments, trash cans, hanging plants, and anything else that can be picked up by the wind.
- ◆ **Prepare** to cover all windows of your home. If shutters have not been installed, use pre-cut plywood as described above. Note: Tape does not prevent windows from breaking, so taping windows is not recommended.
- ◆ **Fill your car's gas tank.**
- ◆ **Check batteries** and stock up on canned food, first aid supplies, drinking water, and medications.

Hurricane Forecast for 2006

Hurricane hot spots: Most vulnerable cities

Forecasts of another active Atlantic hurricane season raise the possibility of a Katrina-like catastrophe elsewhere in the USA. A look at potential big-city disasters.



For more information, please visit the LIPA storm center at <http://lipower.org/stormcenter/>